

McKESSON

Premium Bath Bench

removable back and arms
plastic frame

For use with MFR# 146-RTL12505.

INSTALLATION INSTRUCTIONS

NOTE: Before assembly, insure that all parts and quantities match parts list. Inspect all components for shipping damage. If any parts are determined to be missing or damaged, contact your dealer/retailer for replacements.

WARNING!

DO NOT use this equipment without first reading and understanding its instruction sheet. If you are unable to understand these instructions, contact a healthcare professional, dealer, or technical person before installing. Otherwise, injury or damage may occur. Use arms for assistance only.

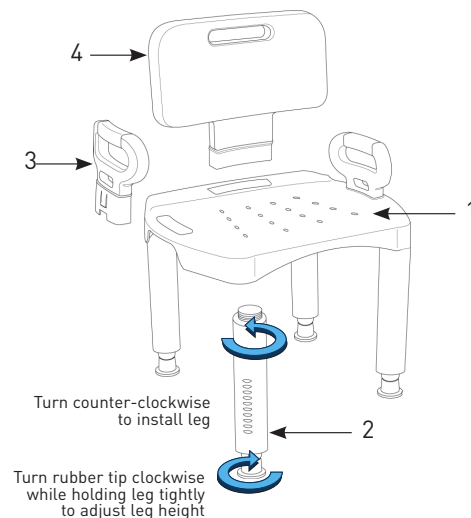
PARTS LIST:

1. Seat – 1 each
2. Leg – 4 each
3. Arms – 2 each
4. Back – 1 each

ASSEMBLY INSTRUCTIONS

1. Place seat (1) upside down on a flat surface. Insert leg (2) into the corner recess of the seat and rotate counter-clockwise until tight. Repeat step #1 for all 4 legs.
2. For model with arms (3) place chair upright and insert arms into holes in side of seat until arm is fully engaged.
3. For models with a back (4) place back in the slot, which is in the rear of the seat, and insert back until engaged.

To adjust legs for proper height or uneven surfaces, grab the bath bench leg with one hand while rotating the bottom of the leg (where the suction cup attaches to the leg) clockwise. The leg has an adjustment window that indicates the level with a red marker. Turn to desired height and repeat for all legs.



DISASSEMBLY INSTRUCTIONS

1. The back has a lock tab that, when depressed, will allow the back to be pulled out of their slots freely.
2. To remove arms, pinch together the tabs on the arm which, when assembled, will be under the seat.
3. Turn the legs clockwise until removed from bench.

CARE AND MAINTENANCE

1. Do not use an abrasive cleaner. Use a non-abrasive cleaner with warm water.
2. Periodically inspect all components for damage or looseness.

Technical support, replacement parts and warranty information? Call 1-866-694-5085. General product questions? Call 1-800-777-4908

Satisfaction Guaranteed

For complete details, please visit
mms.mckesson.com/mckesson-brands.

Distributed by McKesson Medical-Surgical Inc.
Richmond, VA 23233
PVN B0518
Made in China